

SHELLBANK

Global Marine Turtle Traceability Toolkit



© Colin Davis / Getty Images

BACKGROUND

Six of seven marine turtle species assessed for their risk of extinction are listed as Vulnerable to Critically Endangered. Many factors contribute to this decline, but a significant concern is the ongoing legal and illegal unsustainable take, catch and trade. Over the last 30 years more than 1.1 million marine turtles have been illegally exploited (Senko et al., 2022). However, it remains unclear where this exploitation is occurring, where it is most prevalent today, and which populations are being targeted.

A GAMECHANGER

Launched in late 2022, ShellBank is the world's first traceability toolkit & global database of marine turtle DNA. At its core, ShellBank is a marine turtle genetics traceability tool that aids effective conservation research, management and protection. Initially conceived in 2018 to help fight against the illegal turtle trade, ShellBank has evolved to serve as an invaluable tool for addressing other threats, such as by-catch.

DATA BANKS

ShellBank uses DNA. Its 'banks' of data are a rapidly evolving global repository for marine turtle DNA. Comprising three main databases (Rookery, In-Water and Confiscation), ShellBank stores and uses data from many international partnerships to enable effective traceability. Bolstering accessibility to users around the world, it is constantly being updated and contributed to by many collaborators. Data is primarily mined from published material, is verified by the ShellBank team and stored in the database. It is open source for the reference database (Rookery and In-Water), and privacy-protected for the confiscation database. ShellBank's intent and purpose has been refined over time, and it has a clear vision for growth.

A RAFT OF TOOLS

ShellBank consists of a raft of tools. It offers:



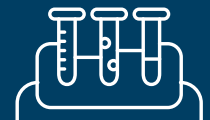
An open-source global database of marine turtle DNA



In-country capacity building and training, technical advice and support

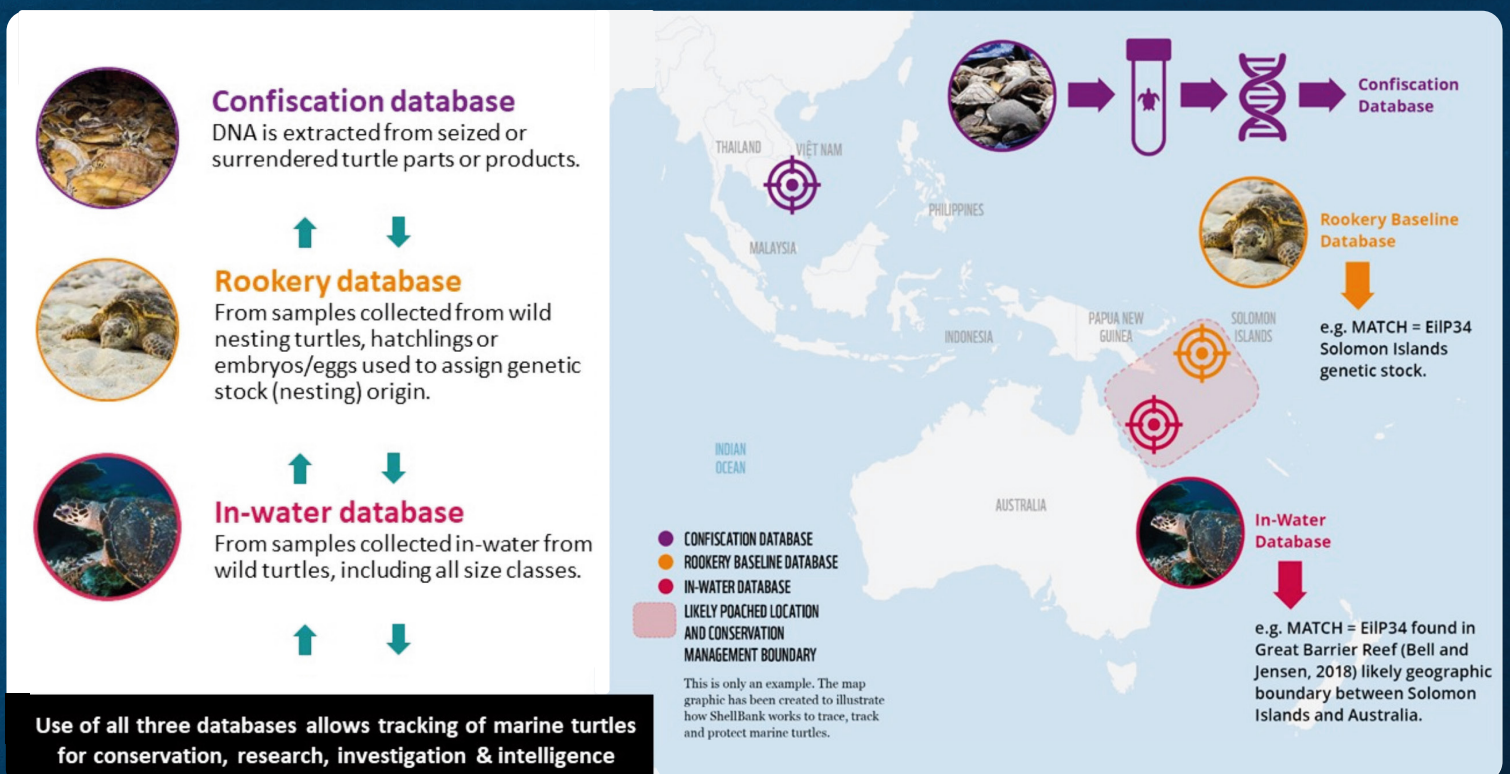


Provision of material and resources such as collection and laboratory guidelines, and genetic kits



Continued scientific development to expand novel techniques and technologies

HOW DOES SHELLBANK WORK?



TRACKING TURTLES FOR CONSERVATION

ShellBank provides a vital resource for effective conservation and management of these threatened species by equipping researchers and conservationists with the data and knowledge to safeguard at-risk marine turtle populations and their habitats. It can be used by researchers and conservation managers to identify and track a turtle's population origin, its connectivity and geographic (transmigratory) boundary.

TRACING TURTLES TO AID LAW ENFORCEMENT AND DECISION MAKERS

ShellBank was built to help trace confiscated turtles, parts and products and to aid law enforcers in illegal turtle use and trade investigations. ShellBank can be used for robust species identification for prosecution purposes, however, its value also lies in building robust intelligence to help pinpoint where targeted efforts are needed. Decision makers can also use ShellBank to help trace and identify illegally harvested or bycaught turtles. Providing these agencies with up-to-date population origin references allows for the detection and mapping of overexploited populations, poaching hotspots and to pinpoint critical areas for better monitoring, surveillance and protection (e.g. marine protected or local marine managed areas).



COLLABORATORS AND PARTNERSHIPS

ShellBank is a collaborative effort that thrives on the collective expertise and support of a diverse array of stakeholders. Our partnerships include government agencies, conservation organizations, research institutions, universities, and local communities.

ShellBank is being led by the World WideFund for Nature (WWF) in partnership with the Australian Museum - Australian Centre for Wildlife Genomics, NOAA - Southwest Fisheries Science Center, and TRACE Wildlife Forensics Network.



SCALING SHELLBANK

ShellBank can address critical population declines, aid in understanding transboundary migration and identify what populations and areas require protection while tackling the overexploitation of marine turtles. With an initial focus on hawksbill turtles, one of the most Critically Endangered marine turtle species on the planet, ShellBank has already expanded to other marine turtle species (e.g. green turtles) and is set to help law enforcement and conservation managers reverse the trajectory of many marine turtle populations struggling to recover.

To achieve this major goal we need to work closely together. Strengthening the reference databases and ensuring effective project roll-out are critical steps that hinge on our ShellBank team supporting local researchers and governments through hands-on sample collection training and analysis. By bolstering local research and government capabilities, we not only fill existing data gaps but also lay the foundation for sustainable, local leadership in marine turtle conservation and action.

**WE ARE URGENTLY SEEKING \$1.5M
USD BY 2024 TO SUPPORT
SHELLBANK'S CRUCIAL LEAP FROM
PILOT INTO PRACTICE OVER THE
NEXT 2 YEARS. FROM 2026 WE AIM
TO SECURE \$15M USD.**



**HELP US TO BUILD
SHELLBANK.
SAVE TURTLES.**

Learn more



www.shellbankproject.org



shellbank@wwfint.org